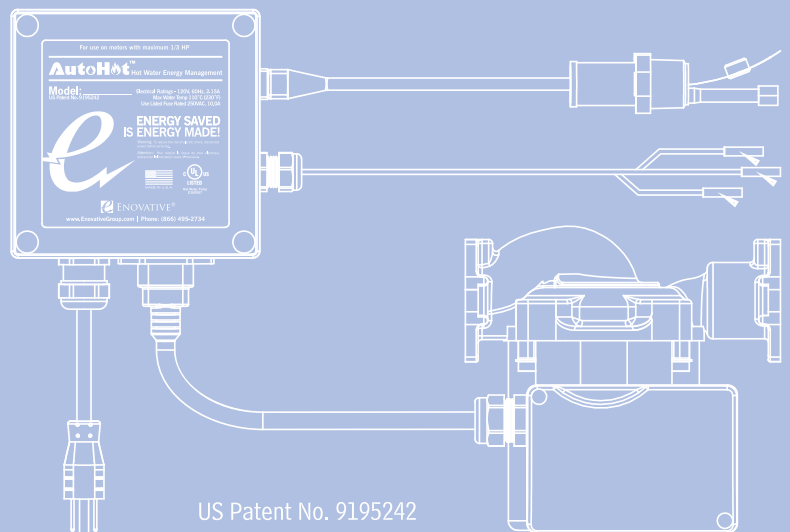




# AutoHot®

## DEMAND RECIRCULATION AND DHW ENERGY MANAGEMENT SYSTEM

IECC AND CA T24 ENERGY CODE COMPLIANT



 ENOVATIVE®



ASSEMBLED IN U.S.A.





## Comprehensive Hot Water Energy Management The AutoHot® Energy Management System (EMS)

AutoHot® introduces its most advanced domestic hot water (DHW) recirculation control and energy management system to maximize your water heating and distribution efficiency while notifying you when energy is being wasted or service is needed. The AutoHot EMS uses an array of sensors to optimize the run time of your water heater and recirculation pumps, while continuously collecting data on the system performance, ensuring that your systems are always providing safe, comfortable and energy efficient hot water.

### FEATURES

#### DEMAND RECIRCULATION

Optimizes recirculation pump run time for energy savings and reduced plumbing leaks.

#### TEMPERATURE MODULATION

Resets water heater temperature based on building demand.

#### DATA COLLECTION

Continuously collects system performance data to show you how well your system is running.

#### REMOTE MONITORING AND CONTROL

Access system performance data from any device, anywhere.  
Control your water heater and pumps remotely.

#### AUTO FAULT DETECTION AND ALERT NOTIFICATIONS

Receive hot water system fault alert emails when system is not running properly or efficiently.



## DHW Remote Monitoring and Control

### IDEALLY SUITED FOR:

Multifamily  
 Condos  
 Hotels / Motels  
 Student Dorms  
 Hospitals



Service water heating is one of the most essential systems in any apartment building, hotel, dorm, or hospital. It is also one of the most costly operating expenses, both in terms of energy use and maintenance.

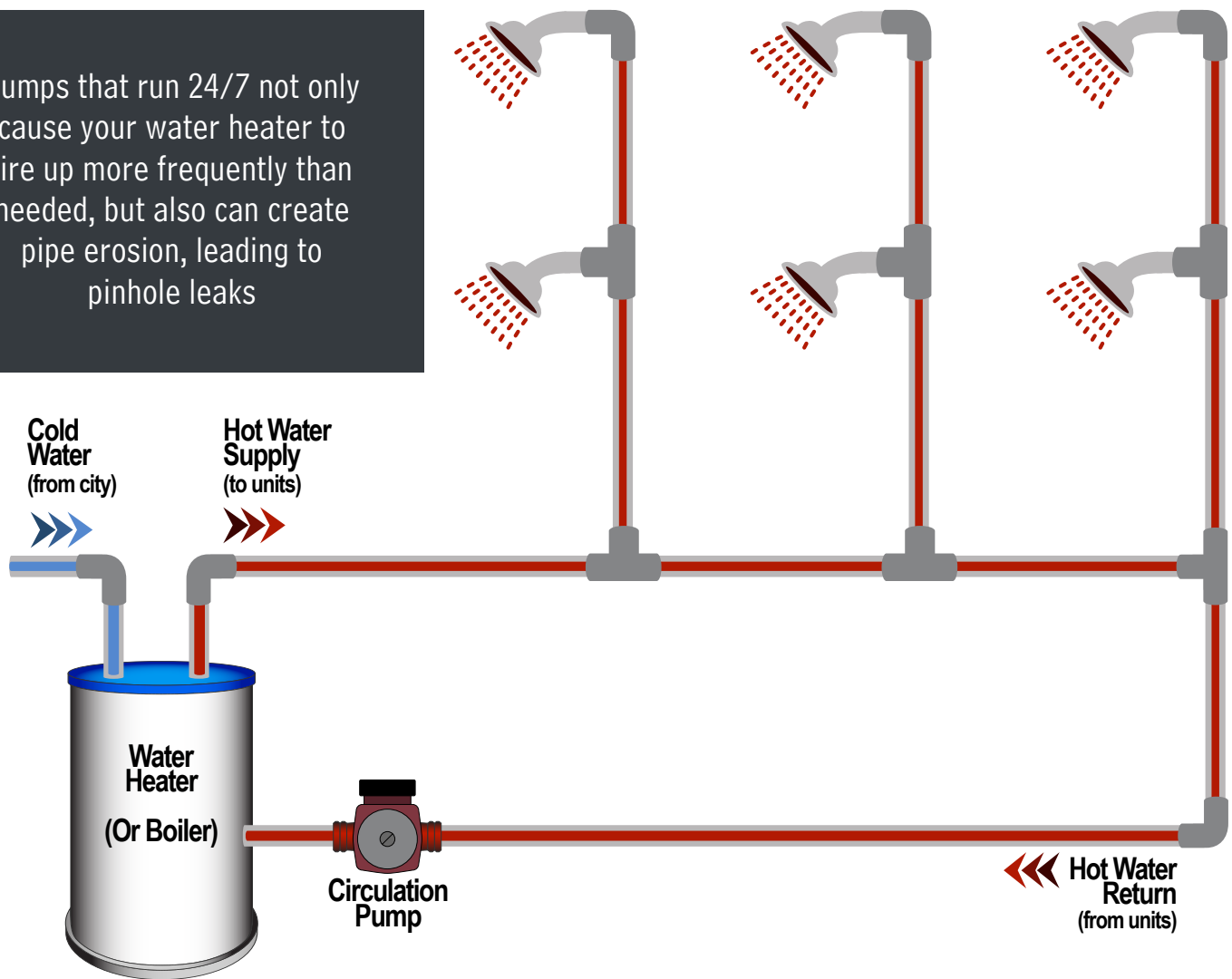
The **AutoHot**® DHW Energy Management System will continuously monitor your buildings hot water system and send you alert notifications if the system ever fails to perform outside of its control settings, or in the event of a pump or water heater failure that requires immediate service. Using our web based front end portal, you can see real time and historical hot water usage data that gives you the power to control energy losses and ensure your systems are always running at their peak performance.

- **Monitors the energy performance of your hot water system 24 hrs a day**
- **Sends you notifications when service is needed or energy being wasted**
- **Allows you to control system remotely**



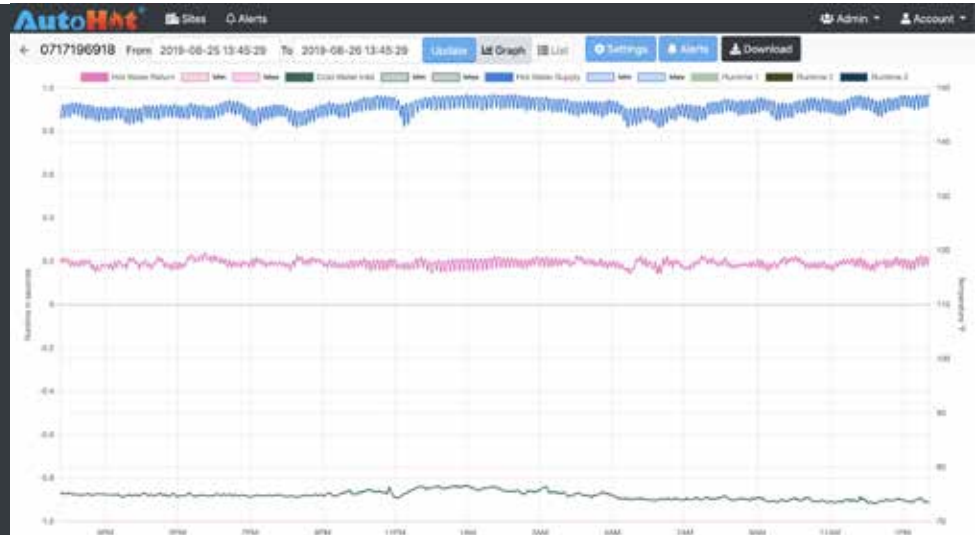
## Optimized System Performance and Data Collection

Pumps that run 24/7 not only cause your water heater to fire up more frequently than needed, but also can create pipe erosion, leading to pinhole leaks



### AutoHot® EMS Benefits:

- Reduces pump operation by 90%
- Reduces total hot water energy use by up to 30%
- Reduces occurrence of pipe pinhole leaks
- Increases useful life of hot water system



## Designed for Performance - Energy Code Compliant

Are you a plumbing engineer or building energy consultant looking to design a high performing hot water system?

AutoHot® meets the latest building energy code requirements for demand controlled recirculation, including:

- International Energy Conservation Code (IECC)
- California Title 24
- Department of Energy- Zero Energy Ready Home (ZERH) Program



MODEL NUMBER	DESCRIPTION	MODEL NUMBER	DESCRIPTION
DC000A	AutoHot® EMS recirculation and boiler controller, 3 temp sensors, SD Card. Standalone control unit.	DC099A	AutoHot® EMS recirculation and boiler controller, 99-series pump, 3 temp sensors, MicroSD Card.
DC055A	AutoHot® EMS recirculation and boiler controller, 55-series pump, 3 temp sensors, MicroSD Card.	DC150A	AutoHot® EMS recirculation and boiler controller, 150-series pump, 3 temp sensors, MicroSD Card.

### ACCESSORIES

MODEL NUMBER	DESCRIPTION	MODEL NUMBER	DESCRIPTION
CTS	Copper Temperature Sensor	ERK-001	External Relay Kit, for use with AutoHot controller and pumps greater than 1/3 HP, or pumps without capacitors
DTS	Digital Temperature Sensor	RM-ROU-001	Cellular Router - includes SIM card - For Remote Monitoring
CT-100	Current Transducer (CT) logger		